

Welcome!

UCSF School of Nursing



University of California, San Francisco

Enjoying Your Visit

- These slides complement the information available from the UCSF School of Nursing web site at <http://nurseweb.ucsf.edu>
- ***Always check the web site for the most current information.***
- Also, you may contact us directly:
 - ◆ Email info@nursing.ucsf.edu, or telephone (415) 476-1435, or write:
 - ◆ **Nursing Student Affairs Office**
 UCSF Box 0602
 2 Koret Way, #N-319X
 San Francisco, CA **94143-0602**



Table of Contents

(Note: This document is *interactive*. Click on the [underlined](#) links to move you from slide to slide within this document; click the [email](#) links to use your email program; click on [Web Links](#) to use your browser to visit matching web pages on the internet.)

- ◆ Entrance Requirements:
[MEPN](#) [MS](#) [PhD](#) [PhD-Soc](#)
- ◆ Department of [Physiological Nursing](#)
- ◆ Department of [Family Health Care Nursing](#)
- ◆ Department of [Community Health Systems](#)
- ◆ Department of [Social and Behavioral Sciences](#)
- ◆ [Masters Entry Program \(MEPN\)](#)
- ◆ [The Masters Core Curriculum](#)

MEPN Program Overview

- Accelerated and Advanced 3 year program of study
- Potential Students: Those desiring to become a RN with advanced knowledge and skills befitting graduate preparation
- Applicants **must** identify a nursing specialty at the time of application
 - It is essential that you research the different nursing specialty areas thoroughly in advance, that you reflect carefully on your personal interests, strengths, dislikes, talents, and inclinations so as to make the most informed decision possible.

MEPN Entrance Requirements

- **Bachelor's (BA or BS) degree in any field *except* nursing**
 - Persons with highly-specialized Bachelor's degrees (BFA, MFA, BE, BM, etc.) have ***additional*** entrance requirements – see website. All bachelor's degrees must be conferred ***before*** UC enrollment (Sept. 15).
- **Statistics course**
Minimum 3 quarter units or 2 semester units
- **Anatomy & Physiology Course(s)**
Minimum 6 quarter units or 4 semester units combined
- **Graduate Record Examination (GRE)**
GRE must have been taken within the last five years

MEPN Entrance Requirements (2)

- While NOT required for *admission* to MEPN, students must have completed 24 quarter units of natural, behavioral, and social science coursework – including:
 - a course in psychology,
 - 6 units of communication, and
 - a basic writing course;– to be eligible to take the RN licensing exam.

MEPN Entrance Requirements (3)

- Community Participation / Volunteerism
- Transcripts: two from each school
- Four Letters of Reference
- Congruency between Goal Statement and Chosen Specialty Area
- Computer Literacy
- Annual Application Deadline:
September 1st



MEPN Program Fees

- **School of Nursing Fees ***
 - Approximate fees for the first 12 months of the program
Residents and Non-Residents: \$32,000
 - 2009-10 Masters Program Fees (Years 2-3)
California Residents: \$16,468.00 per year

* Fees are **subject to change** without notice

A Typical MEPN “First” Year

The Summer Quarter

- **N141** Pharmacology and Nursing Care
- **N142** Introduction to Professional Nursing
- **N145** Pathophysiology
- Clinical = 8 units

Fall Quarter

- **N143** Effective Communication
- **N144** Adult Medical-Surgical / Geriatric Nursing
- Clinical = 9.5 units

Winter Quarter

- **N146** Parent-Child Nursing
- **N148** Socio-cultural Issues in Health, Illness
- **N149** Psychiatric/Mental Health Nursing
- Clinical = 6.5 units

Spring Quarter

- **N147** Childbearing Families
- **N150** Community Health Nursing
- **N151** Issues in Nursing
- Clinical = 9 units

MS Program Overview

- Specialty Focused, Minors Available
- Two Year Program – Minors and customized programs may increase length
- Master of Science in Nursing (MS)
- *Applications* – Best Opportunities if submitted by **February 1st**
- GRE is NOT required
- At least *one year* of practice experience is *highly preferred*
- *Classes*: 2 to 3 days/week = full-time
Part-time study available



Master's (MS) Program

Entrance Requirements [Web Link](#)



- **BSN from NLN or CCNE accredited school**
 - RNs with a *non-nursing baccalaureate* (bachelor's) from an accredited U.S. college or university are *also* eligible to apply
- **California R.N. Licensure**
(International students – see me; non-direct care options)
- **Transcripts** (2 from each school, with minimum 3.0 GPA)
- **Four Reference Letters**
- **Practice Experience – recent; one year – some +**
- **Practice experience recommended in certain specialties**
- **Introductory Statistics course** (without time limitation)
- **GRE** (taken within last 5 years)
- **Congruency between goal statement and chosen specialty**
- **Computer literacy/proficiency**
- **TOEFL minimum score of 550/213** (International applicants)
- ***Application review begins in February***
(6/1 deadline for international applicants and 8/1 deadline for U.S. applicants)

Specialties Open to MEPN / MS Students

- CNS Roles

- Cardiovascular
- Critical Care/Trauma
- Oncology
- Child/Family Psychiatric Mental Health
- Advanced Community Health & International Nursing
- Gerontological
- Occupational/ Environmental Health
- Perinatal

- Career Specialties

- Leadership/Administration
- Health Policy

- NP Roles

- Acute Care
- Pediatric
- Neonatal*
- Gerontological
- Adult
- Adult Psychiatric Mental Health
- Child/Family Psychiatric Mental Health
- Family
- Nurse Midwifery
- Occupational / Environmental Health

* = both NP and CNS

Minors Available to MEPN / MS Students



Genomics Discussion

- Education
- Ethics
- Genomics
- Health Policy
- HIV/AIDS
- Post-Trauma
Mental Health

Master's Core Curriculum



Core Courses (units)

Nursing Theory Course (3)

221, 227, 253 or 279

257: Assessment/Mgmt. of Psychiatric Signs and Symptoms (2)

270: Adv Health Assessment (2)

262A: Research Methods (2)

245: Health Protect. & Promotion (2)

232: Clinical Pharmacology (2)

246: Symptom Assessment/Mgmt. (3)

2XX: Research Utilization (2)

234: Program Management (3)

S222: Health Care Econ/Policy (3)

241: Dimensions of Advanced Practice Nursing (2)

230: Outcome Measurements in Health Care (3)

226: Clinical Implications of Managed Care (1)

The MS program can be completed in two years, but may be spread over a longer period.

At a *minimum*, the program consists of 30 – 36 units of coursework and 8 units of graduate professional work. Overall unit requirements vary by specialty.

In addition to the Master's Core, **other** courses specific to the specialty area are also taken.

A Comprehensive Exam or Thesis is required prior to graduation.

*These core courses are
subject to change.*

PhD in Nursing

Program Overview



- Highly Individualized and Mentored Course of Study during which you will learn the research process within your area of focus
- Program of study average: 4 years, 5 months
 - Range: 3 – 7 years.
- Modal Curriculum /Coursework: 1 – 1.5 years
- Review Faculty Research Activities Listing
 - Faculty with subject or phenomena of interest
 - Faculty with methodology of interest
 - Faculty with population of interest
- Make appointment to discuss intentions with identified faculty

PhD in Nursing

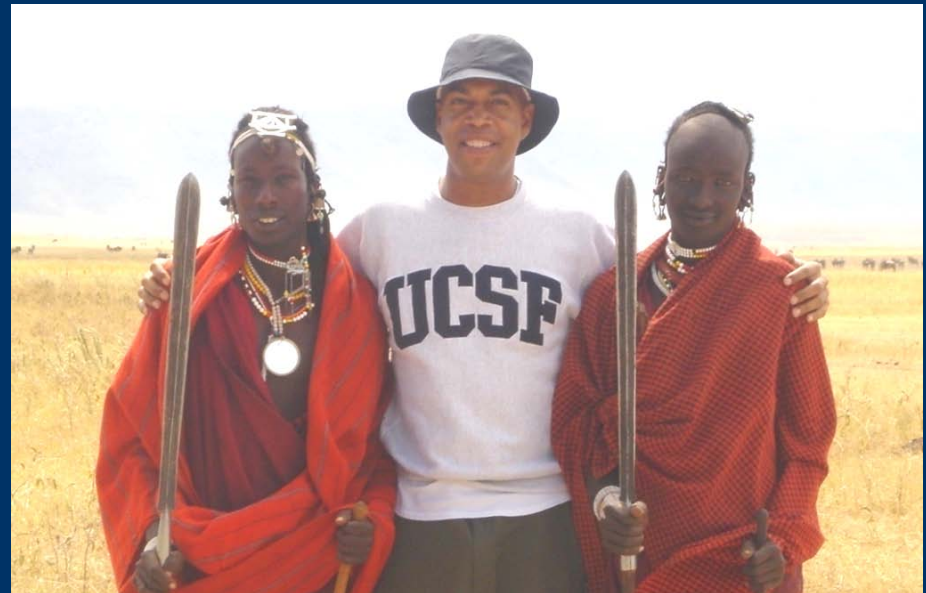


Curriculum [\(Web Link\)](#)

- Nursing Science
- Nursing Theory
- Nursing Research
- Curriculum Development

Coursework

- Across Departments and Schools
- May include courses taken at other UC campuses, and at consortia campuses



UCSF Doctoral Student

Doctoral (PhD) Program in Nursing

Entrance Requirements

[Web Link](#)



- A one year minimum of professional nursing **experience**.
- BSN - PhD is possible.
- **GPA**. An undergraduate grade point average (GPA) of **3.2**, if a master's degree has been earned, a GPA of **3.5** is expected.
- **Transcripts** (two copies from each school, with cumulative minimum GPA of 3.2 undergraduate and 3.5 graduate).
- **Goal Statement**, congruent with chosen area of interest.
- Four **reference letters**, maximum of five.
- **Graduate Record Exam** (GRE, taken within last five years)
- **TOEFL** (required for international applicants, *minimum scores*: computer 213 or paper 550)
- **Statistics** – required, a “recent” course desired
- Completion of a **Research** course
- Computer literacy
- **Application Deadline: December 15**
(extends to May *if* an opening exists in study area). PhD program applicants are **strongly encouraged** to submit their applications as **early** as possible.

PhD in Sociology



- ***Potential Students:***
Bachelor's or Master's degree in Sociology or related field
- ***Program Emphasis:***
Sociology and social psychology of health, illness, health care policy and institutions
- ***Theoretical Bases:***
Classical, interactionist, and contemporary perspectives; using qualitative and/or quantitative methods
- ***Aim:***
Educate students towards professional careers as sociologists, in both academic and applied contexts.



PhD in Sociology

[Web Link](#)



- Students:
 - develop understanding of sociological theory
 - develop research skills
 - develop a sociological perspective on the many dimensions of health and illness.
- Graduates from the Ph.D. program in Sociology have a record of securing excellent placements after graduation:
 - academia
 - research institutes
 - government
 - health agencies

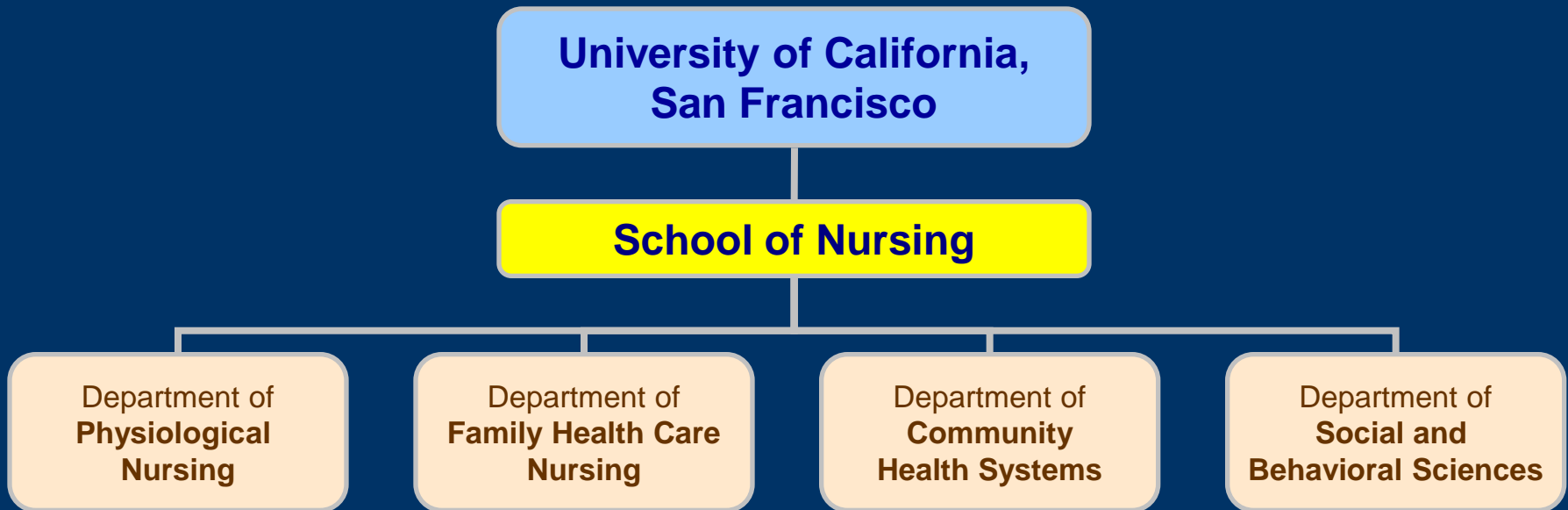


UCSF Laurel Heights Complex

Specialty Offerings by Department

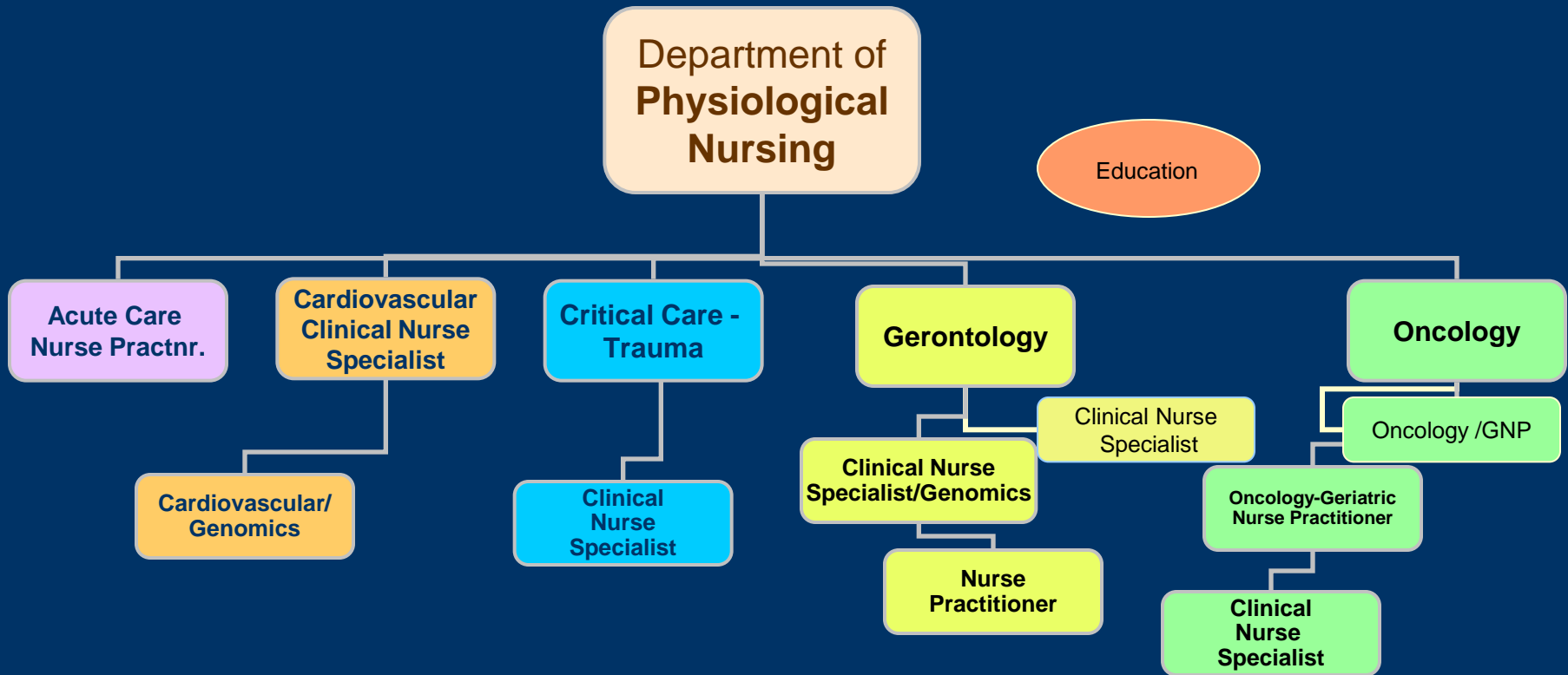
- The School of Nursing has four departments:
 - Department of **Family Health Care Nursing**
 - Department of **Community Health Systems**
 - Department of **Physiological Nursing**
 - Department of **Social & Behavioral Sciences**
- The next few slides link each Specialty Area to a Department within the School of Nursing
- Potential MEPN & MS students apply for a specific **specialty area**, *not to a department.*
- *PhD:* Potential doctoral students (Nursing and Sociology) apply to investigate specific phenomena or area(s) of research interest

School of Nursing Departments



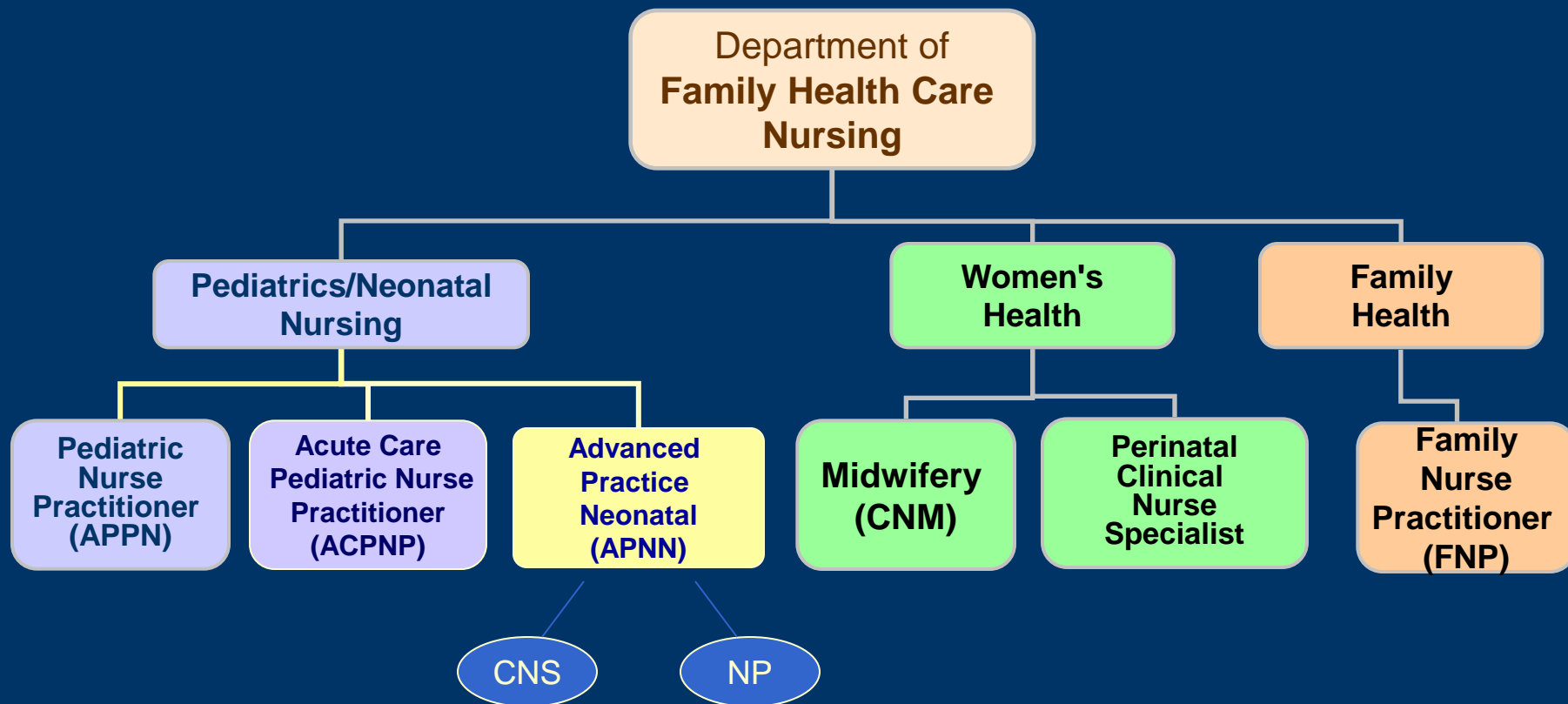
Specialty Areas in each department are listed on the following slides.
Where possible, web links are provided for program information.

Department of Physiological Nursing



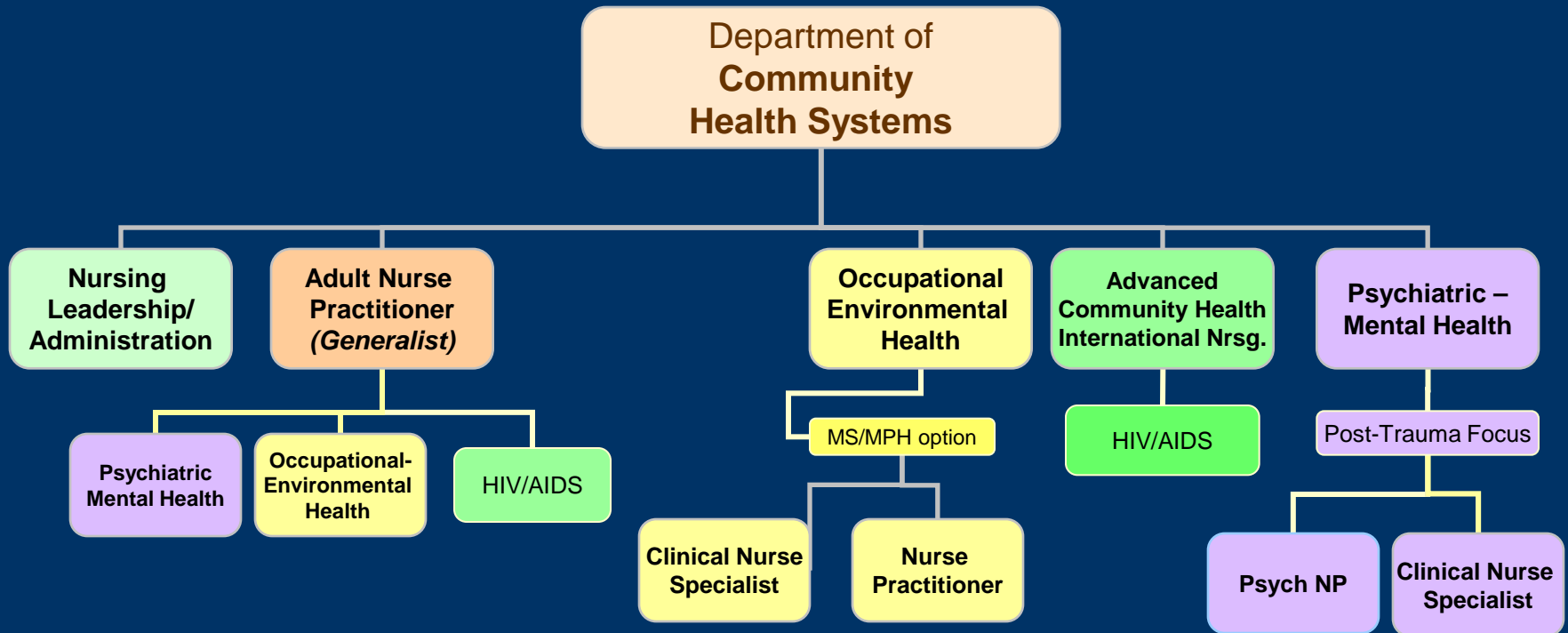
An **Education** minor is available across all departments. Dual specialty programs with **Genomics** are available in Gerontology, Cardiovascular, and Oncology. Students in other specialties may include **Genomics** as a minor.

Department of Family Health Care Nursing



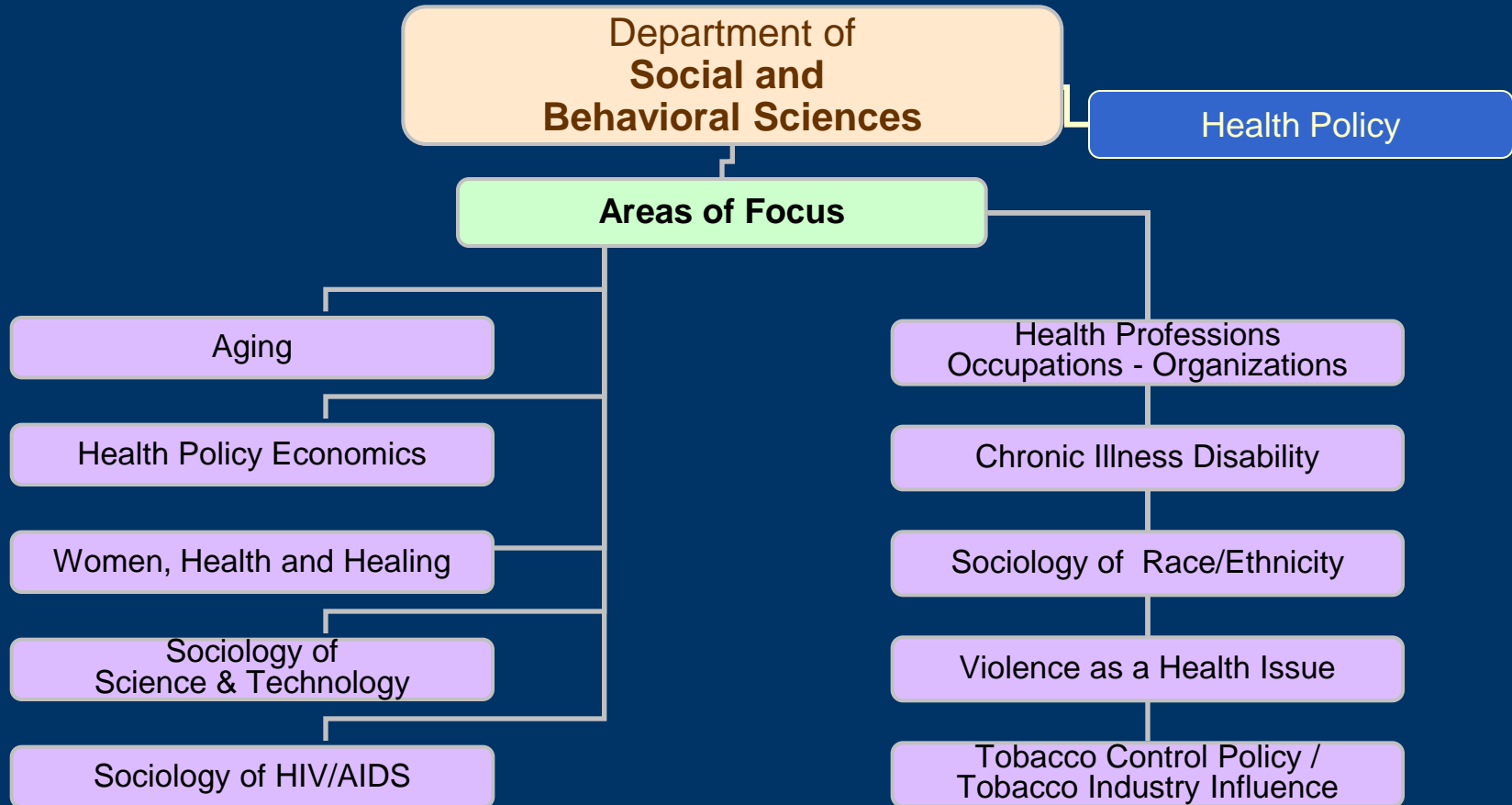
The CNS role in the Pediatric specialty *may* be offered on a periodic basis in our Special Studies Program.

Department of Community Health Systems



A **HIV-AIDS** Minor is available across all departments.

Department of Social and Behavioral Sciences



An **Ethics** minor is available across all departments.
A **Health Policy** minor is available across all departments.

Frequently Asked Questions (FAQ)



- **MEPN Program Questions** [Web Link](#)
- **Master's Program Questions** [Web Link](#)
- **PhD (Nursing) Program Questions** [Web Link](#)
- **PhD (Sociology) Information** [Web Link](#)
- **Financial Aid Information** [Web Link](#)
- **Student Housing Information** [Web Link](#)



'Person' Contacts

- ✘ **Judy Martin-Holland, PhD, RN, CS, FNP**
Associate Dean for Academic Programs
judy.martin-holland@nursing.ucsf.edu

- ✘ **Shirley Manly-Lampkin, PhD, RN**
Assistant Dean for Academic Services and Diversity
shirley.manly-lampkin@nursing.ucsf.edu

- ✘ **Asha Reed, Recruitment Principal**
asha.reed@nursing.ucsf.edu

- ✘ **Office of Student Affairs,**
UCSF School of Nursing
info@nursing.ucsf.edu • Telephone (415) 476-1435

'Place' Contacts



School of Nursing Departments

- ◆ Physiological Nursing
(415) 476-2191
- ◆ Community Health Systems
(415) 476-1504
- ◆ Family Health Care Nursing
(415) 476-4668
- ◆ Social and Behavioral Sciences
(415) 476-3964

Nursing Student Affairs Office
(415) 476-1435

- Applications (*updated each July*) [Web Link](#)
- Evening Information Sessions [Web Link](#)



Interesting Nursing Web Sites



- **UCSF School of Nursing**

Web Link <http://nurseweb.ucsf.edu>

- **California Board of Registered Nursing (BRN)**

Web Link <http://www.rn.ca.gov>

- ***Sigma Theta Tau* International
Nursing Honor Society**

Web Link <http://www.nursingsociety.org>

Recommended: Click “Career Map”, then click
“Considering Nursing as a Career”



Thanks for visiting with us!
Evening Information Session: [Web Link](#)



Join Us!